



S Cloverdale St: Pedestrian Enhancement Project

Early Community Check-In

Our vision, mission, and core values

Vision: Seattle is a thriving equitable community powered by dependable transportation

Mission: to deliver a transportation system that provides safe and affordable access to places and opportunities

Committed to **6 core values:**

- Equity
- Safety
- Mobility
- Sustainability
- Livability
- Excellence

Presentation Overview

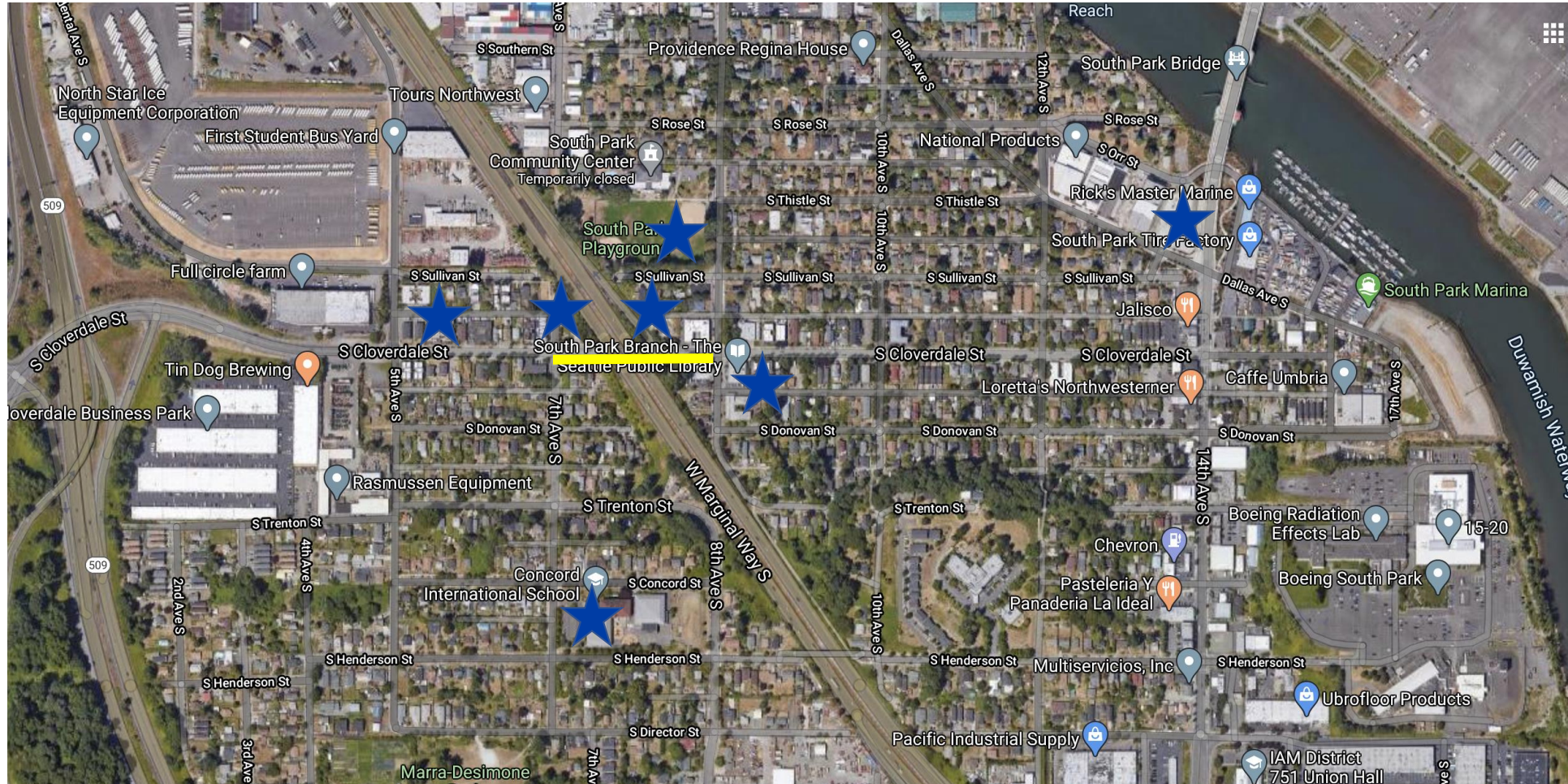
Follow Up from May 19 DVSS meeting

1. Project area
2. Background
3. Existing conditions
4. Opportunities
5. Draft Concepts
6. Discussion
7. Next Steps

Follow-up from May 19 DVSS meeting

1. Update on SR 99 lighting - Implementation in July 2020
 2. 14th and Cloverdale Project - Implementation over Summer 2020
 3. Question about Stay Healthy Streets
 4. Question about tree planting and air quality
 5. Interest in SDOT briefing Georgetown community
 6. Interest in School Zone Speed Camera on 8th and Cloverdale – can be considered in city prioritization in 2021, will also add to West Seattle Task Force project prioritization
- Have been shared with West Seattle Bridge Team for inclusion into West Seattle Task Force project prioritization list/plan

Project area



Background

- 2018 YVYC project
- 8th Ave Signal rebuild and timing adjustment - completed
- New crosswalk at 12th Ave S - completed
- Lighting under the SR 99 underpass – to be installed in July 2020



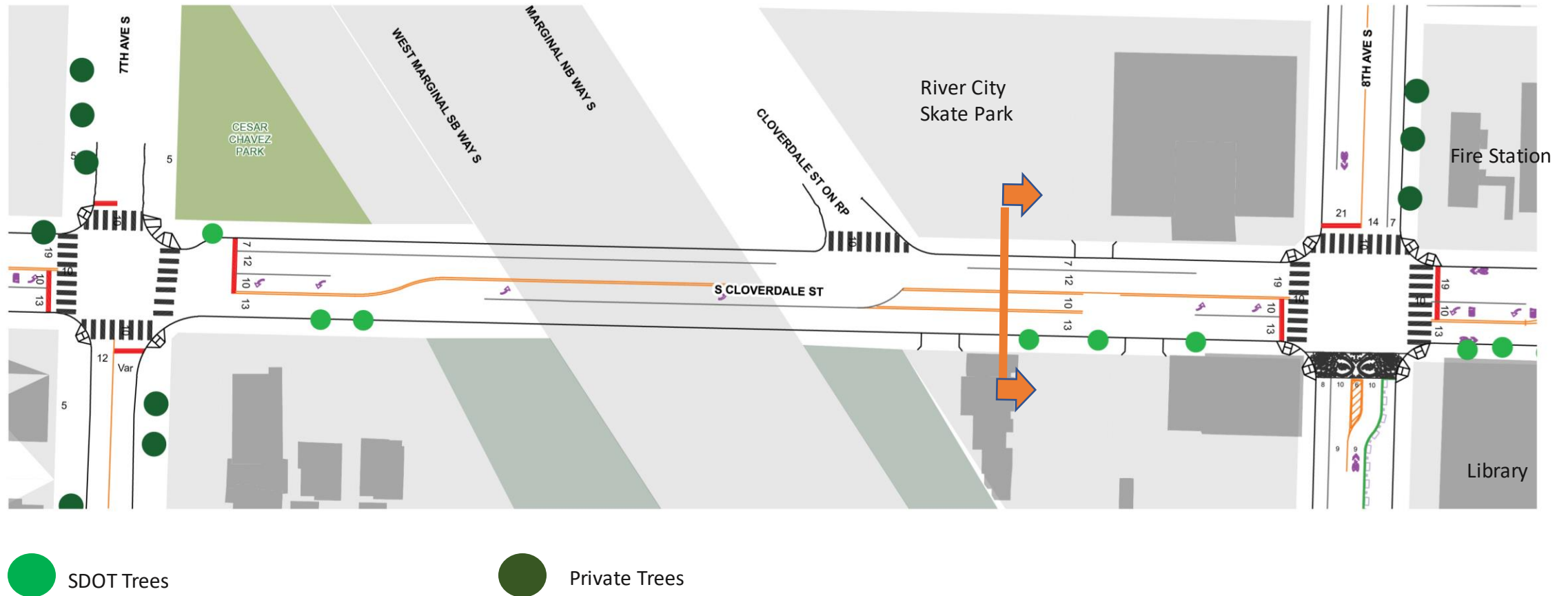
Background

- Project priority is pedestrian safety
- Important pedestrian connection between community destinations, parks, and school
- Major Freight Street, Frequent Transit Network, and Seattle Fire Primary Response Route
- On Ramp to NB SR 99
- SPU mains under turn lane
- \$500k Construction Budget + \$90k YVYC Design Budget

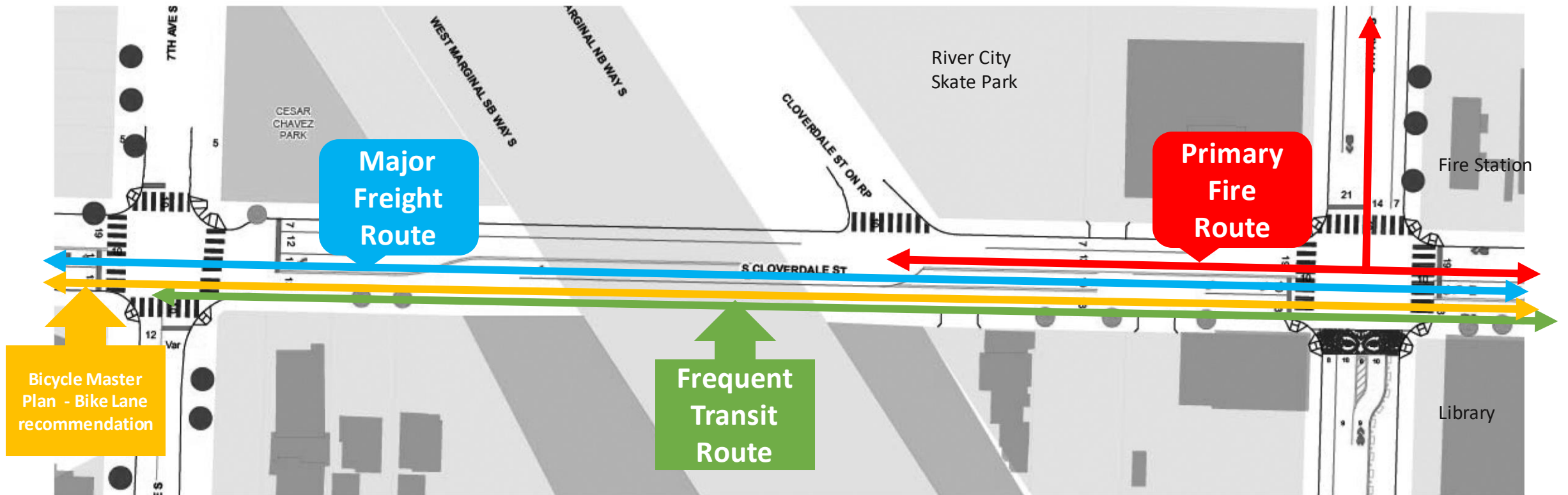
What we have heard:

- Concerns about increases in cut-through and speeding traffic
- Lack of buffer from traffic
- Need for
 - safer pedestrian crossings
 - wider walking areas
 - additional pedestrian lighting

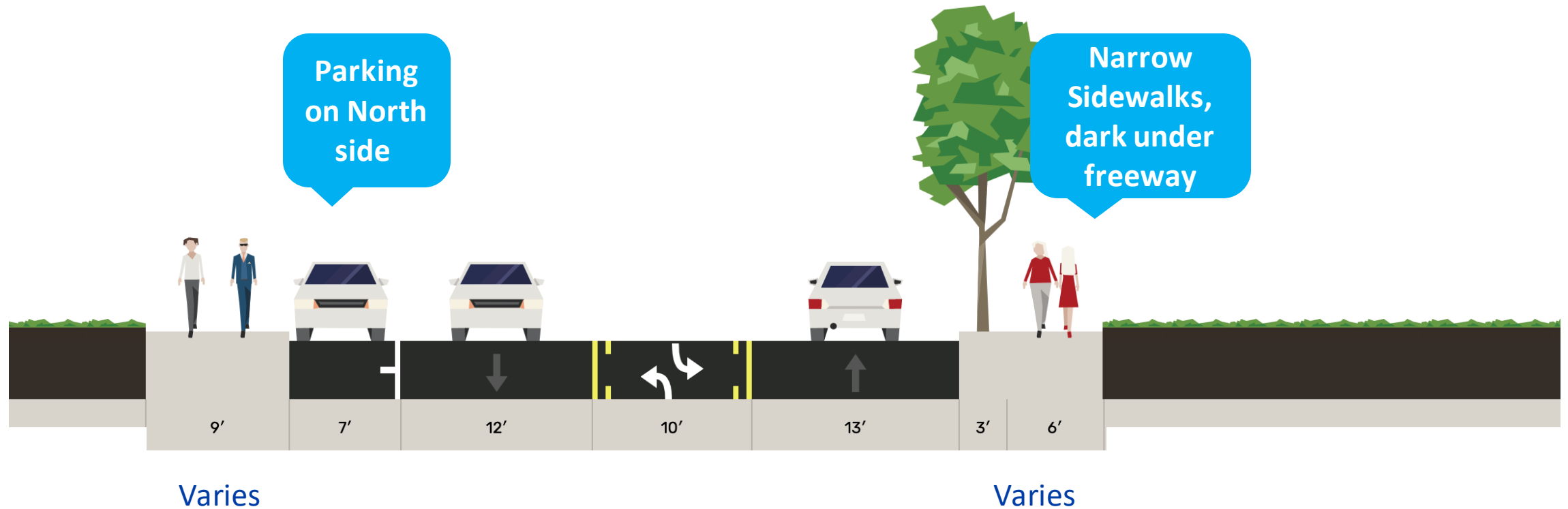
Existing conditions



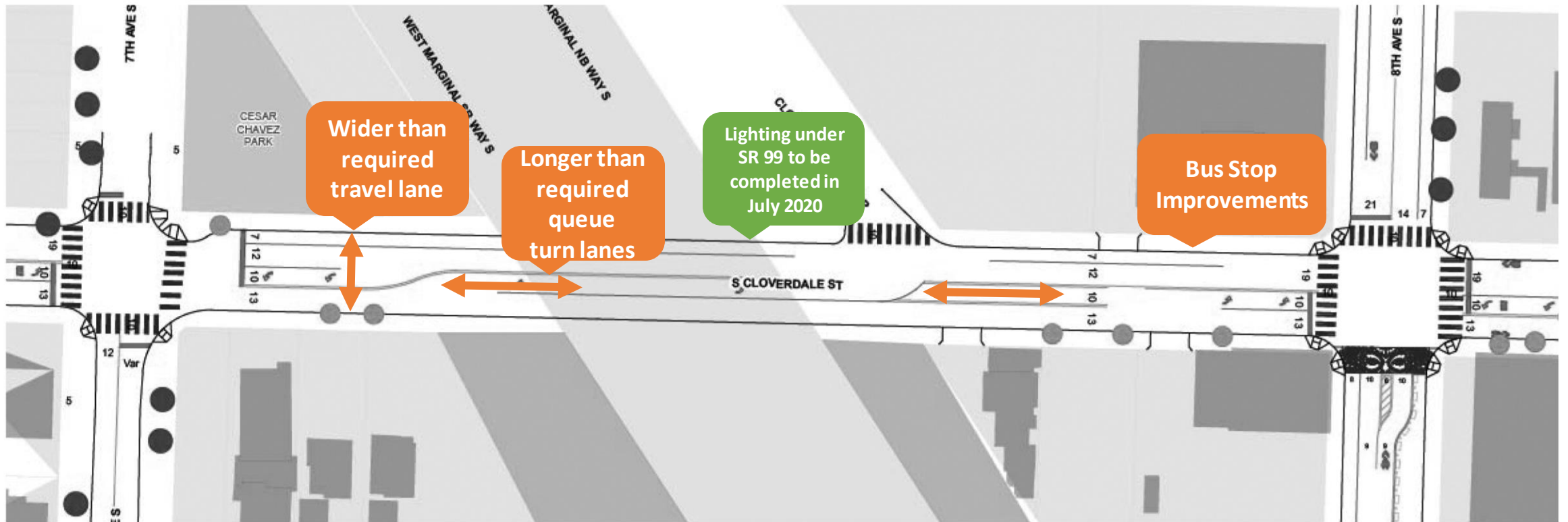
Existing Conditions



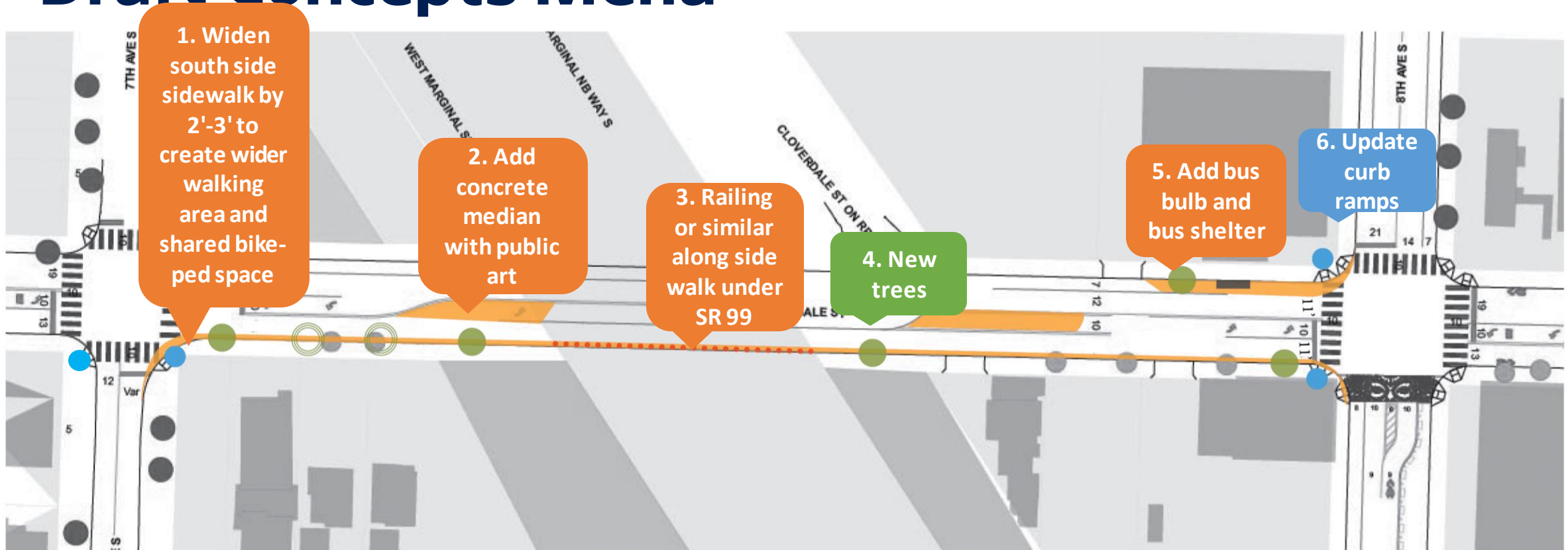
Existing - Looking East



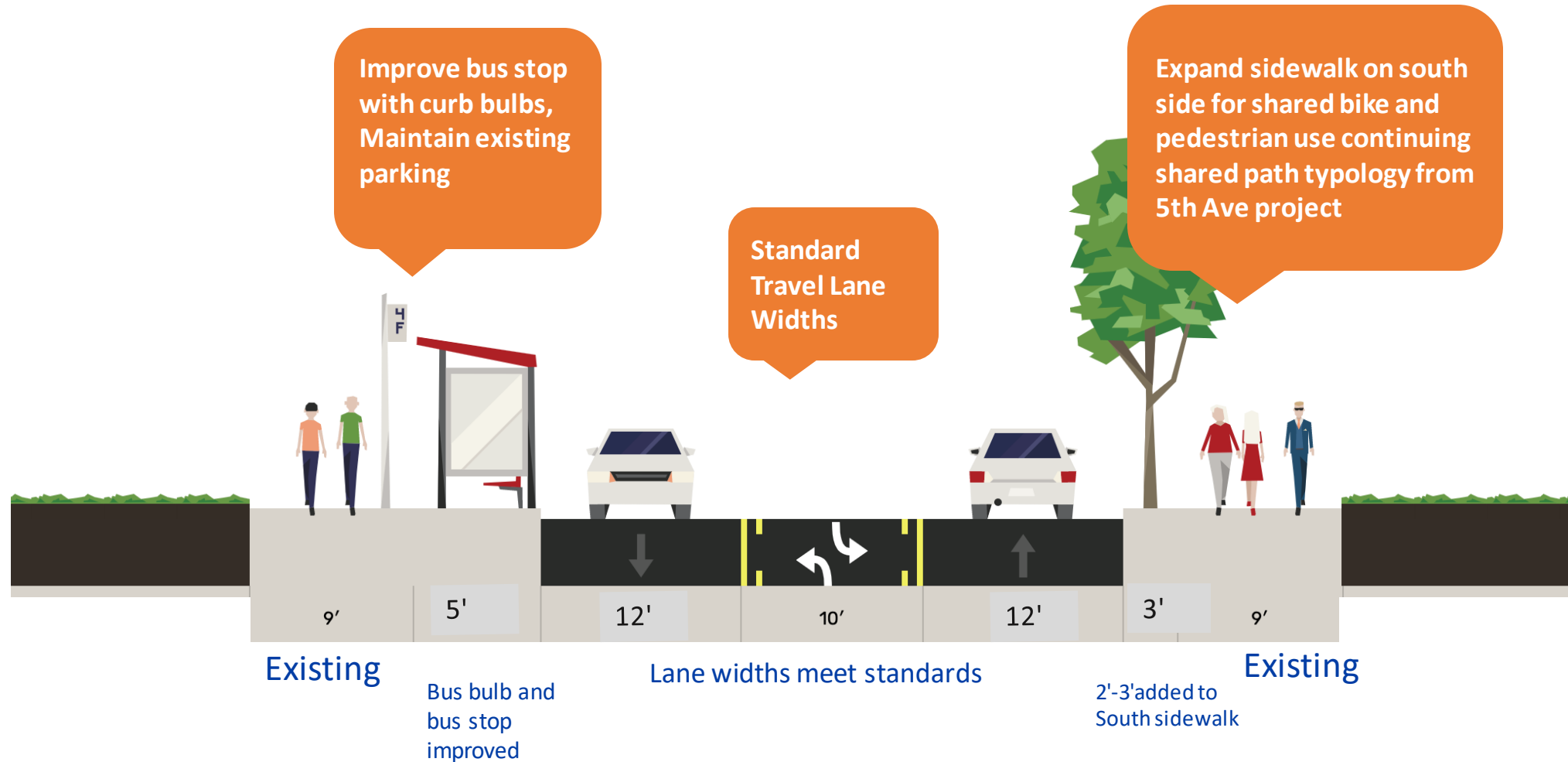
Opportunities



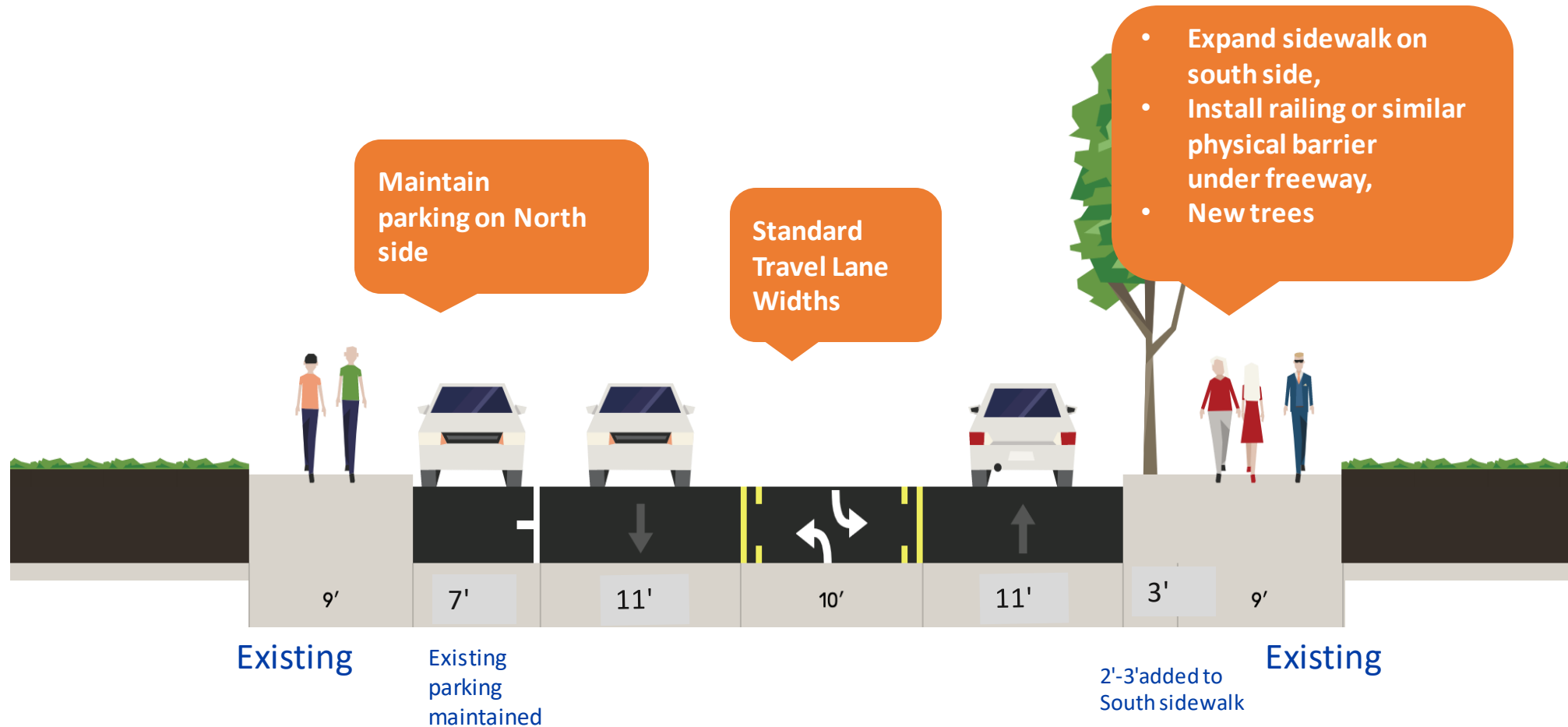
Draft Concepts Menu



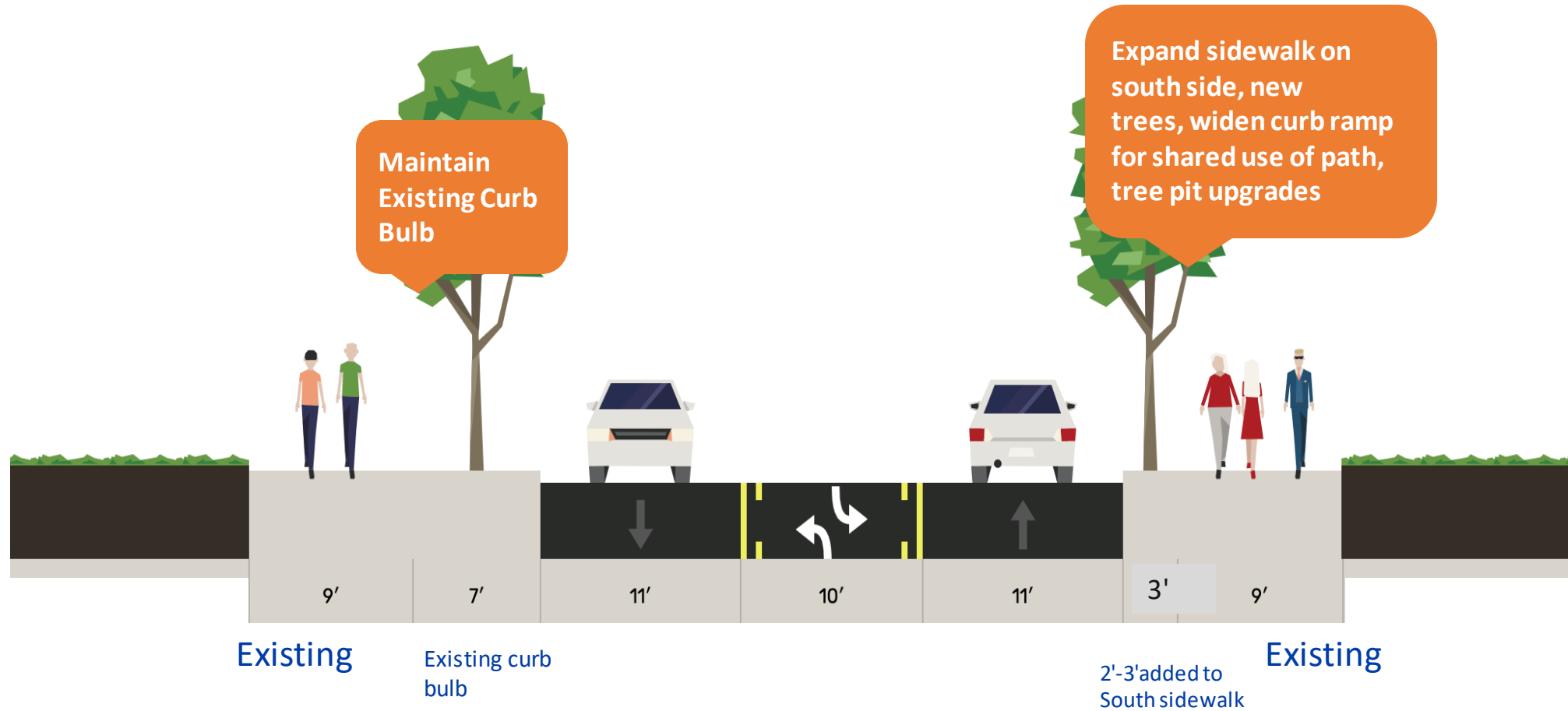
DRAFT Concept - Looking East @ 8th Ave



DRAFT Concept – Looking East under freeway



DRAFT Concept - Looking East @ 7th Ave





Existing - Looking West at 8th Ave S



Existing - Looking East at 7th Ave S



Potential - Looking West at 8th Ave S



Potential - Looking East at 7th Ave S

Discussion

1. Concepts are draft and need further review from Seattle Fire Department. Final project scope will also depend on the budget and costs.
2. What are we missing? Do these improvements address community priorities?
3. How would you prioritize the elements in the shared concepts?
 - a. Wider Sidewalk
 - b. Bus bulb with Shelter
 - c. Standard travel lane widths
 - d. Concrete Median
 - e. Railing or similar physical separation under SR 99
4. We would appreciate your suggestions for how to share these ideas with the wider community for feedback

Next Steps

Date	Activity/action
May-July	Engagement strategy, refine scope and costs, community engagement, coordination with WSB task force
Aug-Sept	Final Scope and Design Development, community engagement
Implementation	To be confirmed

Questions?

aditi.kambuj@seattle.gov | (206) 555-5555

www.seattle.gov/transportation

