

# Project Update

## 23rd Avenue Corridor Improvements Project

Winter 2013

### Project description

Beginning in fall 2014, the Seattle Department of Transportation (SDOT) plans to begin constructing corridor improvements on 23rd Avenue. The project is split into three phases and includes repaving, upgraded traffic signals, and other improvements to benefit transit, pedestrians and bicyclists.

- Phase 1: E John Street to S Jackson Street
- Phase 2: S Jackson Street to Rainier Avenue S
- Phase 3: E Roanoke Street to E John Street

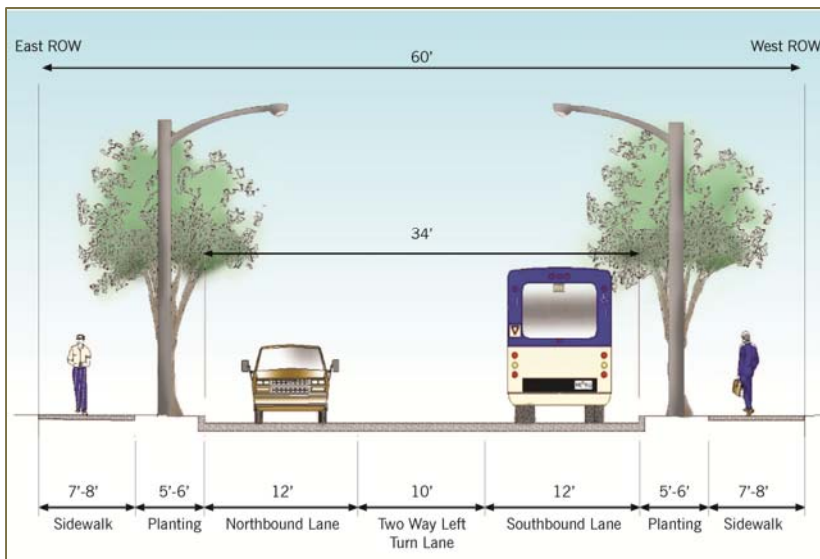
Originally the project included only repaving (Phase 1). SDOT expanded both the project limits and scope as a result of securing grant funding; however, additional funding is needed to fulfill their plan and is being pursued.

### New, three-lane configuration

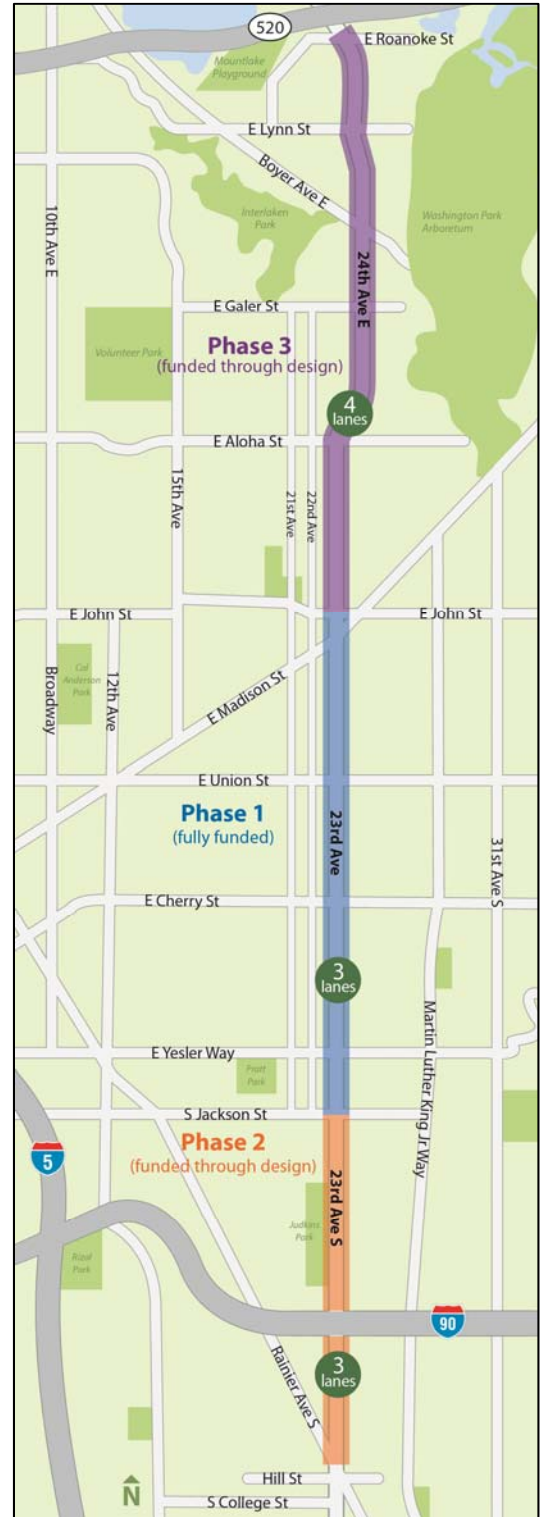
Each day approximately 5,800 transit users, more than 13,400 vehicles, and cyclists and pedestrians use the four-lane 23rd Avenue corridor. As part of the planning phase of the project, SDOT reviewed existing data and asked for community input about how improvements to the 23rd Avenue corridor could balance the needs of all users.

As a result, SDOT is moving forward with designing a three-lane configuration in Phases 1 and 2 – though some key intersections will still have a four-lane configuration. The three-lane configuration includes safety improvements for drivers, pedestrians, and cyclists, as well as increased transit speed and reliability.

### Proposed three-lane configuration



### Project location



## Project benefits

Corridor improvements on 23rd Avenue will include benefits for all users, including:

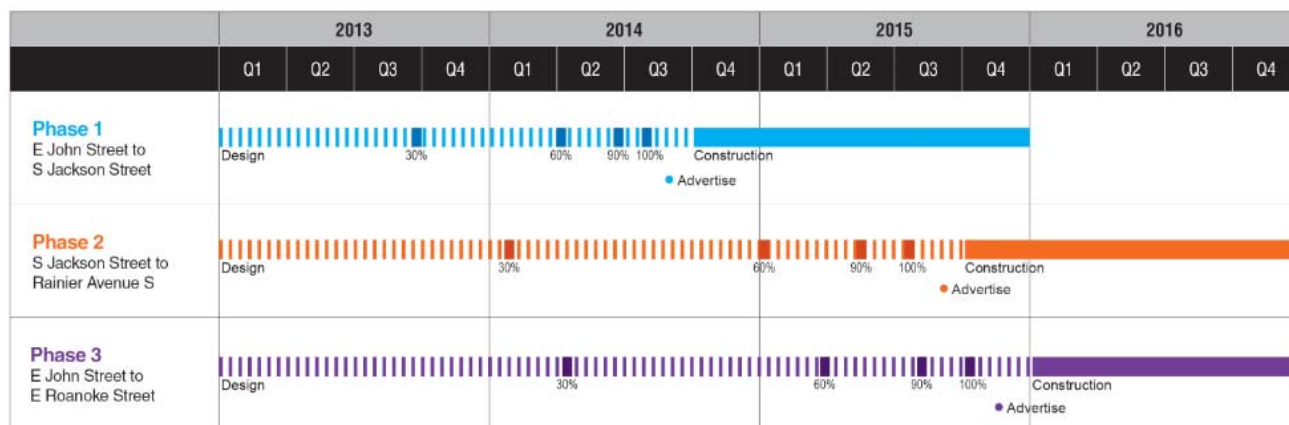
- New pavement
- Pedestrian improvements
- Greenway network to facilitate north-south bicycle travel (21st, 22nd, 24th and 25th avenues south under evaluation)
- Lighting improvements
- Increased transit reliability
- Traffic signal improvements
- Public art

## Related community visioning work

In addition to SDOT's work in the area, our Department of Planning and Development (DPD) is also engaging in a community outreach process to create a vision and an associated neighborhood action plan for the commercial and cultural centers of the Central District on 23rd Avenue S at E Union Street, S Jackson Street and E Cherry Street.

SDOT will continue to coordinate with DPD on this concurrent work to utilize existing resources, understand local interests, goals and concerns, and provide the most opportunity for this important public investment.

## Project schedule



## Project budget and funding

To date, the City of Seattle has secured \$22 million in funding, including:

- \$8 million originally allocated to repave the Phase 1 area
- \$5 million in federal grants
- \$5 million from the State's Transportation Improvement Board
- \$4 million mobility grant from the Washington State Department of Transportation

To implement the full set of improvements identified for Phases 2 and 3 of the 23rd Avenue corridor. SDOT is in the process of pursuing funding opportunities.

### Project Contact Information

Maribel Cruz, Project Communications Lead, [Maribel.cruz@seattle.gov](mailto:Maribel.cruz@seattle.gov), (206) 684-7963

If you need this information translated, please call (206) 733-9990.

Si necesita traducir esta información al español, llame al (206) 733-9990.

如果您需要此信息翻譯成中文，請致電 (206) 733-9990

Kung kailangan mo ang impormasyon na ito na nakasalin sa Tagalog, mangyari lamang na tumawag sa (206) 733-9990.

Nếu quý vị cần thông tin này chuyển ngữ sang tiếng Việt, xin gọi (206) 733-9990.